

DHA 220 E4P 30

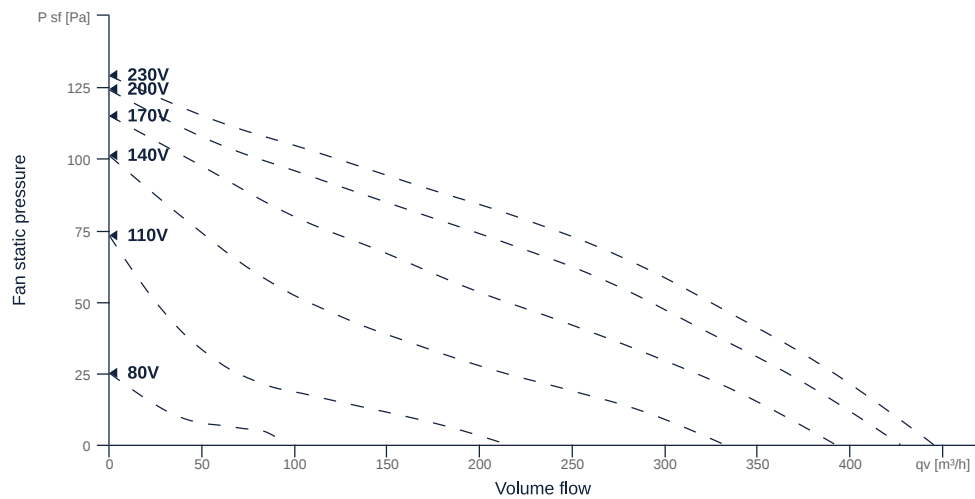
131792

- Horizontal discharge centrifugal fan
- Backward curved impeller
- Housing made of aluminium AlMg3
- Robust single phase AC motor, voltage controllable
- Integrated thermal switch
- Integrated device switch



FAN CURVES

Name	Value	Unit
Volume flow	0	m ³ /h
Pressure	0	Pa



DHA 220 E4P 30

131792

GENERAL DATA

Name	Value	Unit	Formula symbol
Labeling	CE, UKCA		
Duct size	-		WxH _{duct}
Pipe connection size (DN)	DN180		DN
Rated voltage (entire device)	230	V	U _{rated}
Phases (entire device)	1~		phase
Electrical protection (entire device)	6 A		fuse
Housing material	Aluminium		mat _{casing}
Impeller material	Plastic		mat _{impeller}
IP-protection class (casing)	IP44		IP _{casing}
IP-protection class (entire device)	IPX4		IP _{compt}
IP-Protection class (terminal box)	IP44		IP _{ebox}
Weight	5.2	kg	m
Nominal air flow rate, nominal point m ³ /h	349.2	m ³ /h	q _{v,nom}
Nominal external pressure, static	40	Pa	ps, _{nom}
Fan type	Radial		Fan _{type}
Category / Installation situation	A		cat

ERP DATA (LOT 6)

Name	Value	Unit	Formula symbol
Nominal air flow rate, nominal point m ³ /s	0.1	m ³ /s	q _{v,nom}
Actual electrical input power, nominal point	0.02	kW	Pe, _{nom}
Face velocity, nominal point	1.33	m/s	v _{nom}
Nominal external pressure, static	40	Pa	ps, _{nom}
supply air fan static efficiency, nominal point	22	%	η _{es,SUP}
Enclosure sound level, nominal point	62	dB(A)	L _{WA2}
Rating	Product is compliant 2018		

DHA 220 E4P 30

131792

MAXIMAL DATA

Name	Value	Unit	Formula symbol
Max. power consumption (device)	21	W	$P_{ed, max}$
Max. operating current (device)	0.22	A	$I_{ed, max}$
Max. speed	1400	1/min	n_{max}
Max. stat. efficiency	22.9	%	η_{es}
Max. fan efficiency	23.3	%	η_e
Max. flowrate	450	m ³ /h	$Q_{v, max}$
Max. stat pressure	130	Pa	$p_{sf, max}$
Max. medium temperature	80	°C	T_m, max
Max. environment temperature	80	°C	$T_{amb, max}$
Min. environment temperature	-25	°C	$T_{amb, min}$
Min. voltage	80	V	U_{min}
Stall current	0.17	A	I_{LRA}

MOTOR DATA

Name	Value		Unit	Formula symbol
	50 Hz	60 Hz		
Rated frequency (device)		50		f
Motor type		AC 1~		phase
Control type		stepless-controlled		ctrltype
Installation type		ORM (Out)		install
Rotation direction		right		rotation
Isolation class		ISO F		ISOclass
Motor-protection		TAI		protectmotor
Protection class		IP33		IP _{motor}
Is pole-changeable		No		polexch
Type of power supply		AC 1~		pwrSUP _{motor}
Capacity capacitor		3	µF	C_{cond}
Voltage capacitor		400	V	V_{Ucond}
Number of poles (1)		4.000000		num polesw1
Rated voltage	230		V	$U_{rated, f1}$
Rated current	0.1		A	$I_{rated, f1}$
Speed	1291		1/min	n_{f1}
Efficiency	50.8		%	$\eta_m, f1$
Min. temperature	-30		°C	$T_{motor, min}$
Cos Phi	0.900000	0.000000		$\cos \varphi$
UL-Certification motor		None		ULcert

DHA 220 E4P 30

131792

MECHANICAL ACCESSORIES

DVK 180 10 | 153000



- Automatic roof shutter
- Galvanized steel sheet

DAF 150 | 110735



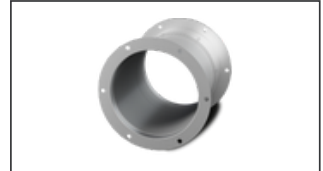
- Roof inlet flange
- Galvanized steel sheet

DAF 180 | 110744



- Roof inlet flange
- Galvanized steel sheet

DAS 180 | 110745



- Flexible roof inlet spigot
- Temperature resistant up to 75 °C

DAF 160 | 137396



- Roof inlet flange
- Galvanized steel sheet

DSF 220-10 | 126170



- Flat roof socket
- Made of aluminum AlMg3
- Sound and heat insulation

DSF 220-12 | 133709



- Sloped roof socket
- Made of aluminum AlMg3
- Sound and heat insulation
- For roof slope 3°

DAP 220 | 133946



- Adapter plate for roof mounting of roof fans
- Galvanized steel sheet

DSS 220-10 | 126356



- Flat roof socket silencer
- Made of aluminum AlMg3
- Sound and heat insulation

DSS 220-12 | 134283



- Sloped roof socket silencer
- Made of aluminum AlMg3
- Sound and heat insulation
- For roof slope 3°

ELECTRICAL ACCESSORIES

TES 0145 | 111858



- Step transformer
- 230 V ~, 50/60 Hz

TEE 015 | 115893



- 5-step transformer
- 230 V ~, 50/60 Hz

DHA 220 E4P 30

131792

ruck

