

# DHA 280 E4 30

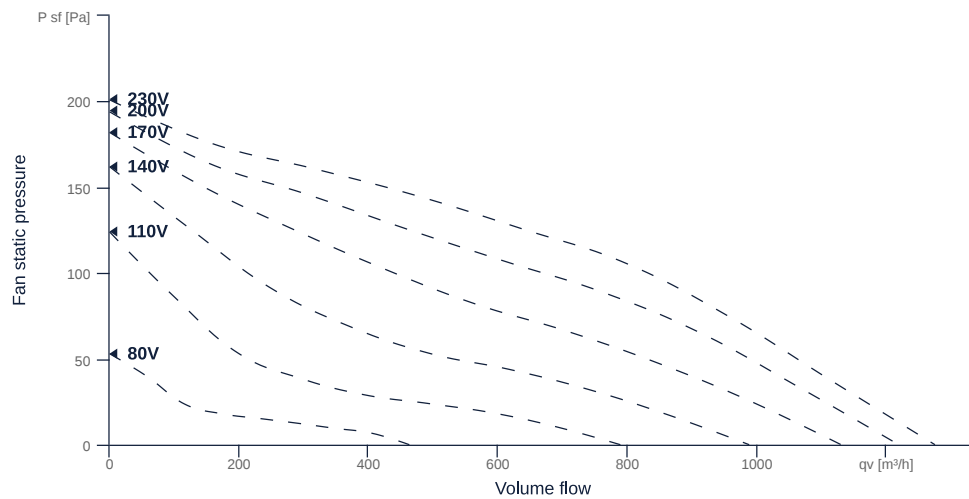
130101

- Horizontal discharge centrifugal fan
- Backward curved impeller
- Housing made of aluminium AlMg3
- Robust single phase AC motor, voltage controllable
- Integrated thermal switch



## FAN CURVES

Name	Value	Unit
Volume flow	0	m <sup>3</sup> /h
Pressure	0	Pa



# DHA 280 E4 30

130101

**ruck**

## GENERAL DATA

Name	Value	Unit	Formula symbol
Labeling	CE, UKCA		
Duct size	-		WxH <sub>duct</sub>
Pipe connection size (DN)	DN250		DN
Rated voltage (entire device)	230	V	U <sub>rated</sub>
Phases (entire device)	1~		phase
Electrical protection (entire device)	6 A		fuse
Housing material	Aluminium		mat <sub>casing</sub>
Impeller material	Galvanized steel		mat <sub>impeller</sub>
IP-protection class (casing)	IP44		IP <sub>casing</sub>
IP-protection class (entire device)	IPX4		IP <sub>compt</sub>
IP-Protection class (terminal box)	IP44		IP <sub>ebox</sub>
Weight	8.24	kg	m
Nominal air flow rate, nominal point m <sup>3</sup> /h	846	m <sup>3</sup> /h	q <sub>v,nom</sub>
Nominal external pressure, static	98	Pa	p <sub>s,nom</sub>
Fan type	Radial		Fan <sub>type</sub>
Category / Installation situation	A		cat

## ERP DATA (LOT 6)

Name	Value	Unit	Formula symbol
Nominal air flow rate, nominal point m <sup>3</sup> /s	0.24	m <sup>3</sup> /s	q <sub>v,nom</sub>
Actual electrical input power, nominal point	0.08	kW	P <sub>e,nom</sub>
Face velocity, nominal point	20.2	m/s	V <sub>nom</sub>
Nominal external pressure, static	98	Pa	p <sub>s,nom</sub>
supply air fan static efficiency, nominal point	29.9	%	η <sub>es,SUP</sub>
Enclosure sound level, nominal point	71	dB(A)	L <sub>WA2</sub>
Rating	Product is compliant 2018		

# DHA 280 E4 30

130101

ruck

## MAXIMAL DATA

Name	Value		Unit	Formula symbol
	50 Hz	60 Hz		
Max. power consumption (device)	86	109	W	P <sub>ed, max</sub>
Max. operating current (device)	0.44	0.54	A	I <sub>ed, max</sub>
Max. speed	1390	1620	1/min	n <sub>max</sub>
Max. stat. efficiency	27.2	25.3	%	η <sub>es</sub>
Max. fan efficiency	27.9	25.7	%	η <sub>e</sub>
Max. flowrate	1270	1450	m <sup>3</sup> /h	Q <sub>v, max</sub>
Max. stat pressure	200	270	Pa	p <sub>st, max</sub>
Max. medium temperature	70	70	°C	T <sub>m, max</sub>
Max. environment temperature	70	70	°C	T <sub>amb, max</sub>
Min. environment temperature	-25	-25	°C	T <sub>amb, min</sub>
Min. voltage	80	80	V	U <sub>min</sub>
Stall current	0.57	0.57	A	I <sub>LRA</sub>

## MOTOR DATA

Name	Value		Unit	Formula symbol
	50 Hz	60 Hz		
Rated frequency (device)		50		f
Motor type		AC 1~		phase
Control type		stepless-controlled		ctrltype
Installation type		ORM (Out)		install
Rotation direction		right		rotation
Isolation class		ISO F		ISOclass
Motor-protection		TAI		protectmotor
Protection class		IP33		IP <sub>motor</sub>
Is pole-changeable		No		polexch
Type of power supply		AC 1~		pwr <sub>sup</sub> motor
Capacity capacitor		3	μF	C <sub>cond</sub>
Voltage capacitor		450	V	V <sub>Ucond</sub>
Number of poles (1)		4.000000		num poles <sub>w1</sub>
Rated voltage	230		V	U <sub>rated, f1</sub>
Rated current	0.48		A	I <sub>rated, f1</sub>
Speed	1368		1/min	n <sub>f1</sub>
Efficiency	51		%	η <sub>m, f1</sub>
Min. temperature	-30		°C	T <sub>motor, min</sub>
Cos Phi	0.990000	0.000000		cos φ
UL-Certification motor		None		ULcert

# DHA 280 E4 30

130101

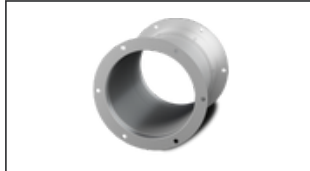
## MECHANICAL ACCESSORIES

DVK 250 10 | 152997



- Automatic roof shutter
- Galvanized steel sheet

DAS 250 | 109413



- Flexible roof inlet spigot
- Temperature resistant up to 75 °C

DAF 250 | 110585



- Roof inlet flange
- Galvanized steel sheet

DAF 200 | 110737



- Roof inlet flange
- Galvanized steel sheet

DSF 280-10 | 126164



- Flat roof socket
- Made of aluminum AlMg3
- Sound and heat insulation

DSF 280-12 | 133736



- Sloped roof socket
- Made of aluminum AlMg3
- Sound and heat insulation
- For roof slope 3°

DAP 280 | 133954



- Adapter plate for roof mounting of roof fans
- Galvanized steel sheet

DSS 280-10 | 126383



- Flat roof socket silencer
- Made of aluminum AlMg3
- Sound and heat insulation

DSS 280-12 | 134357



- Sloped roof socket silencer
- Made of aluminum AlMg3
- Sound and heat insulation
- For roof slope 3°

## ELECTRICAL ACCESSORIES

GS 01 | 102787



- Isolator switch
- U<sub>max</sub> = 400 V, 50/60 Hz
- Switching capacity 400 V 3~ = 7,5 kW
- I<sub>max</sub> = 25 A

TES 0145 | 111858



- Step transformer
- 230 V ~, 50/60 Hz

TEE 015 | 115893



- 5-step transformer
- 230 V ~, 50/60 Hz

# DHA 280 E4 30

130101

**ruck**

